

# SIO 15 LECTURE 20: HURRICANES

Leftovers from Lecture 19

## Conditions for Tornadoes to Form

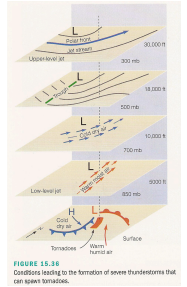
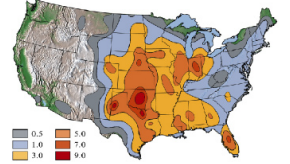


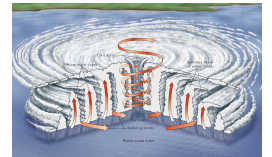
FIGURE 15.20 Conditions leading to the formation of severe thunderstorms that can spawn tornadoes.

## Tornadoes in SoCal

Number of tornadoes per year (per 26,000 sq. km, for a 27-year period)



## Conditions for a Hurricane to form



## The Features of a Hurricane



## What makes Hurricanes Destructive?

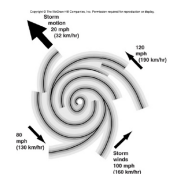
2012 Superstorm Sandy

## The Development of a Hurricane



## The Saffir-Simpson Scale

## Wind Speeds in a Hurricane

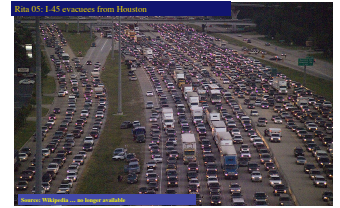


## Hurricanes

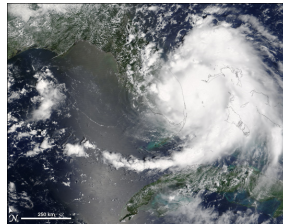
1900 Galveston, TX

## Hurricane Evacuations

2017 Harvey - 2005 Rita



## 2005 Hurricane Katrina



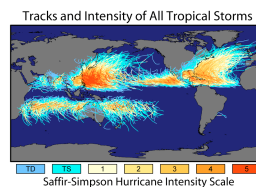
## 2017 Hurricane Maria

other recent hurricanes

## watch short Videos 20a,b

### Where do Hurricane Occur?

- Naming Convention    - Location and Frequency



- Hurricane Paths

### Atl./E. Pac Hurricanes and El Niño

Hurricanes in the East Pacific

Observations for SoCal

The Cold California Current